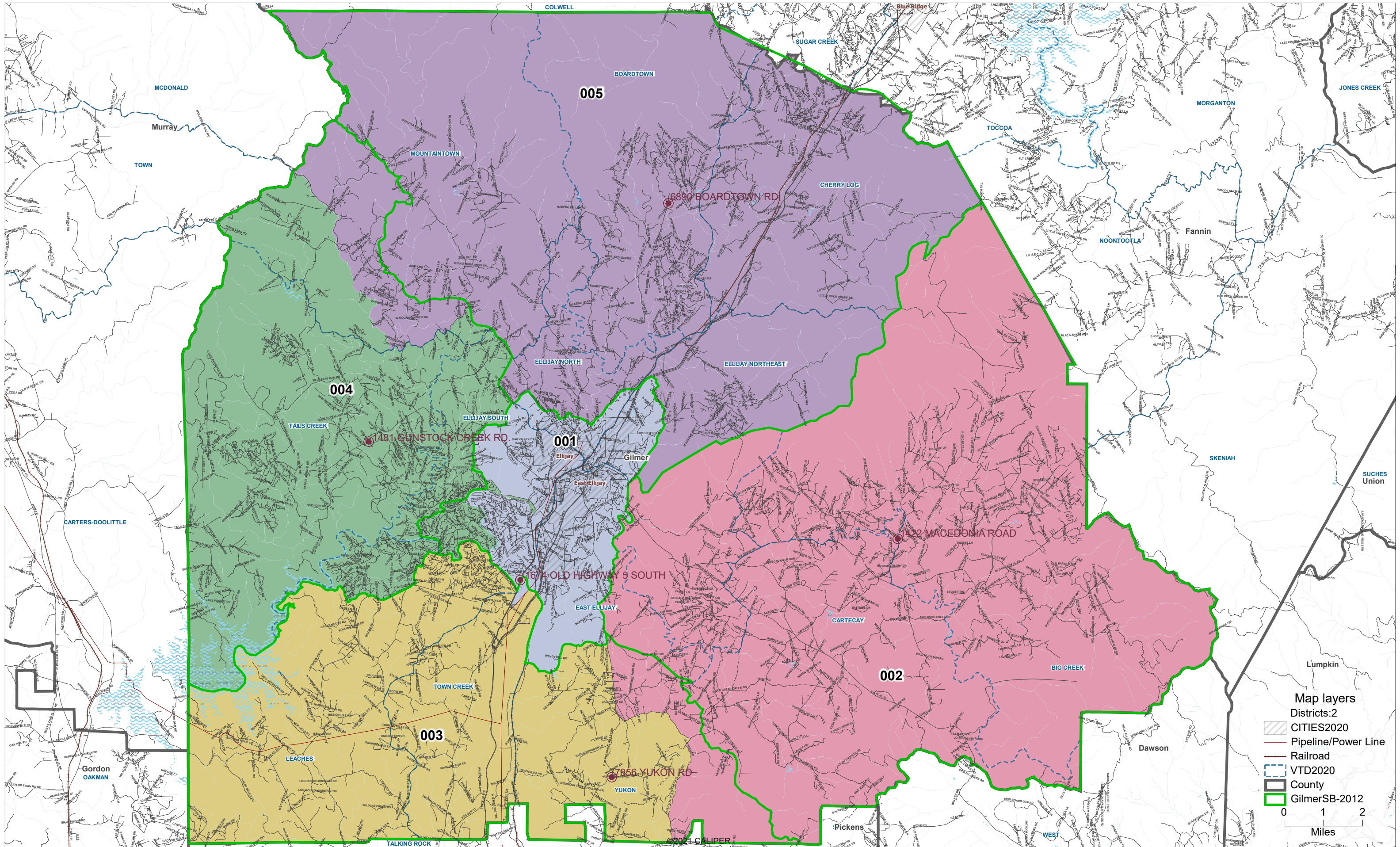


# Draft2 - Gilmer County School Board Districts



**Map layers**

- Districts:2
- CITIES2020
- Pipeline/Power Line
- Railroad
- VTD2020
- County
- GilmerSB-2012

0 1 2  
Miles

User: Gilmer

Plan Name: GilmerSB-Draft2-2022

Plan Type: Local

## Population Summary

Thursday, January 27, 2022

3:56 PM

### Summary Statistics:

Population Range: 6,199 to 6,346  
Ratio Range: 0.02  
Absolute Range: -72 to 75  
Absolute Overall Range: 147  
Relative Range: -1.15% to 1.20%  
Relative Overall Range: 2.34%  
Absolute Mean Deviation: 54.80  
Relative Mean Deviation: 0.87%  
Standard Deviation: 58.46

District	Population	Deviation	% Devn.	[% NH_Wht]	[% NH_Blkl]	[% Hispanic Origin]	[% NH_Asn]	[% NH_Ind]	[% NH_Hwn]	[% NH_Oth]	[% NH_2+ Races]
001	6,296	25	0.40%	69.38%	0.37%	26.78%	0.68%	0.16%	0%	0.27%	2.37%
002	6,346	75	1.20%	90.77%	0.35%	4.6%	0.49%	0.24%	0%	0.25%	3.31%
003	6,199	-72	-1.15%	87.84%	0.4%	7.73%	0.23%	0.21%	0%	0.24%	3.36%
004	6,205	-66	-1.05%	86.09%	0.44%	8.85%	0.15%	0.19%	0%	0.27%	4.01%
005	6,307	36	0.57%	86.41%	0.48%	9.4%	0.54%	0.19%	0%	0.27%	2.71%

**Total: 31,353**

**Ideal District: 6,271**